

Appendix

We calculate the percentage of tailpipe-CO₂ emissions reduction in the new vehicle fleet using equation 1 as follows:

$$\% \text{ change in fleet } CO_2 = \Delta = 100 * \frac{Fleet CO_2^{Counterfactual Fleet} - Fleet CO_2^{Actual Fleet}}{Fleet CO_2^{Actual Fleet}} \quad (1)$$

The actual fleet can be divided into two categories: PEV and non-PEV. In contrast, the counterfactual fleet is made up of the non-PEV fleet and the replaced fleet.

$$\begin{aligned} \Delta &= 100 \\ &* \frac{(Fleet CO_2^{non-PEV Fleet} + Fleet CO_2^{Replaced Fleet} - Fleet CO_2^{non-PEV Fleet} - Fleet CO_2^{PEV Fleet})}{(Fleet CO_2^{non-PEV Fleet} + Fleet CO_2^{PEV Fleet})} \end{aligned} \quad (2)$$

The non-PEV fleet in the numerator in equation (2) cancels out, leaving:

$$\Delta = 100 * \frac{(Fleet CO_2^{Replaced Fleet} - Fleet CO_2^{PEV Fleet})}{(Fleet CO_2^{non-PEV Fleet} + Fleet CO_2^{PEV Fleet})} \quad (3)$$

The fleet total CO₂ (g/mile) can be calculated by multiplying the total number of fleet vehicles by the fleet average CO₂. Furthermore, the total number of fleet vehicles can be calculated by multiplying the total number of vehicles by the fleet's market share. This results in:

$$\Delta = 100 * \frac{N^{PEV} * (Fleet CO_2^{Replaced Fleet} - Fleet CO_2^{PEV Fleet})}{N^{Total} * ((1 - x^{PEV}) * Fleet CO_2^{non-PEV Fleet} + x^{PEV} * Fleet CO_2^{PEV Fleet})} \quad (4)$$

Substituting x^{PEV} for N^{PEV} divided by N^{Total} gives:

$$\Delta = 100 * \frac{x^{PEV} * (Fleet CO_2^{Replaced Fleet} - Fleet CO_2^{PEV Fleet})}{((1 - x^{PEV}) * Fleet CO_2^{non-PEV Fleet} + x^{PEV} * Fleet CO_2^{PEV Fleet})} \quad (5)$$

Dividing numerator and denominator by $Fleet CO_2^{non-PEV Fleet}$ results in:

$$\begin{aligned} \Delta &= 100 \\ &* \frac{x^{PEV} \left(\frac{Fleet CO_2^{Replaced Fleet}}{Fleet CO_2^{non-PEV Fleet}} - \frac{Fleet CO_2^{PEV Fleet}}{Fleet CO_2^{non-PEV Fleet}} \right)}{\left((1 - x^{PEV}) + x^{PEV} * \frac{Fleet CO_2^{PEV Fleet}}{Fleet CO_2^{non-PEV Fleet}} \right)} \end{aligned} \quad (6)$$

where

Δ represents the percentage of tailpipe-CO₂ avoided,

Replaced fleet represents the ICEV fleet that would have been sold had PEVs not been sold,

$\frac{Fleet CO_2^{Replaced Fleet}}{Fleet CO_2^{non-PEV Fleet}}$ represents the sales-weighted average fleet tailpipe-CO₂ level (g/mile) for the replaced fleet,

$\frac{Fleet CO_2^{PEV Fleet}}{Fleet CO_2^{non-PEV Fleet}}$ represents the sales-weighted average fleet tailpipe-CO₂ level (g/mile) for the PEV fleet,

$\overline{Fleet CO_2}^{non-PEV Fleet}$ represents the sales-weighted average fleet tailpipe-CO₂ level (g/mile) for the non-PEV fleet,
 x^{PEV} represents the market share of PEVs in the new vehicle fleet,
 N^{PEV} represents the total number of PEVs in the new vehicle fleet and
 N^{Total} represents the total number of vehicles in the new fleet.

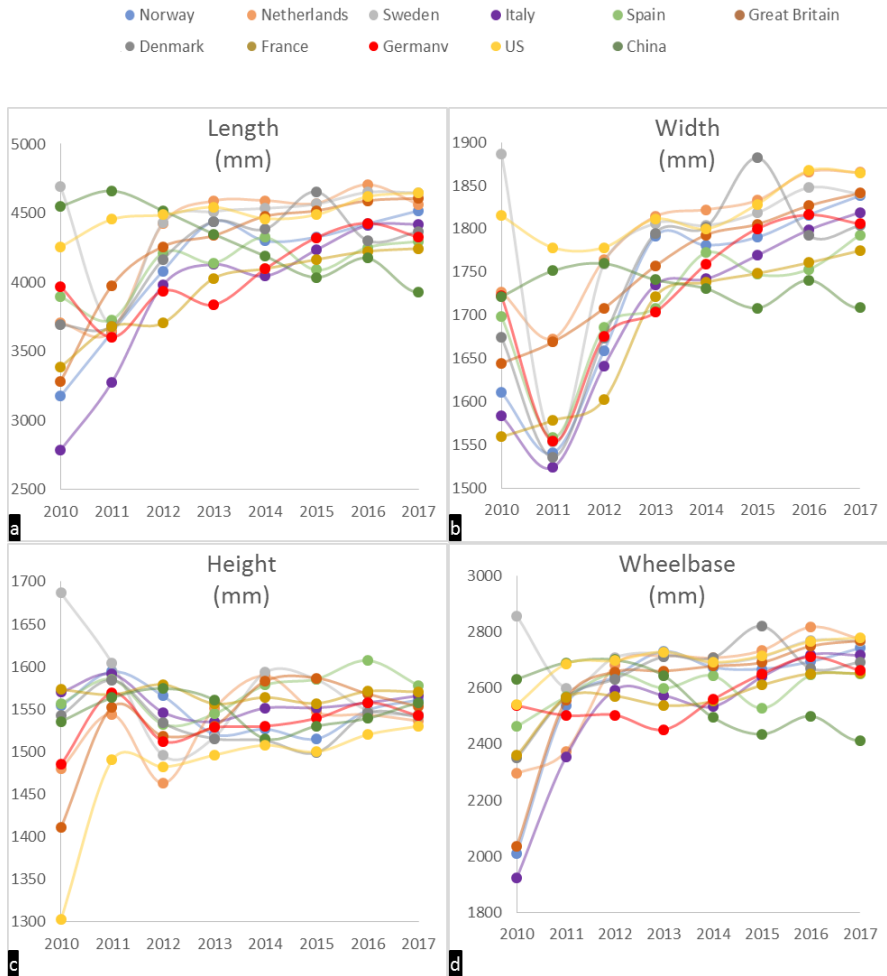


Figure A1. Evolution of sales-weighted average new PEV fleet summary statistics for: (a) length, (b) width, (c) height and (d) wheelbase.

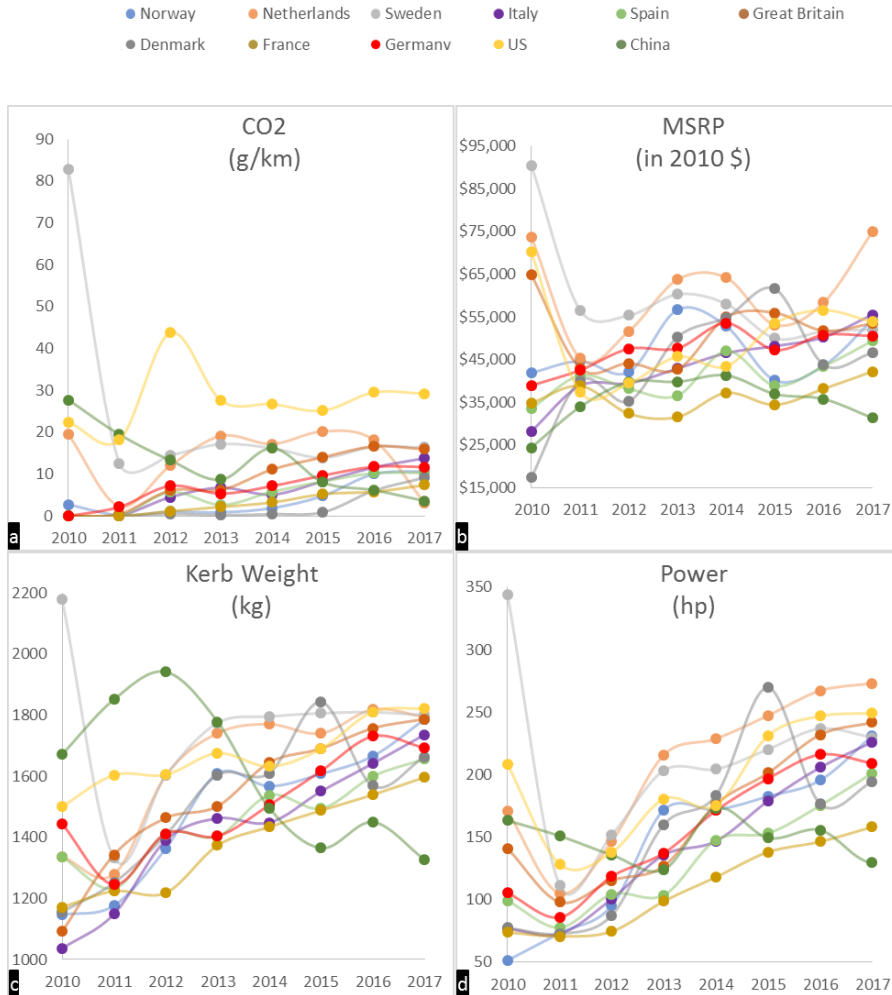


Figure A2. Evolution of sales-weighted average new PEV fleet summary statistics for: (a) tailpipe-CO₂ (g/km), (b) MSRP (in 2010 \$), (c) kerb weight (kg) and (d) horsepower (hp).

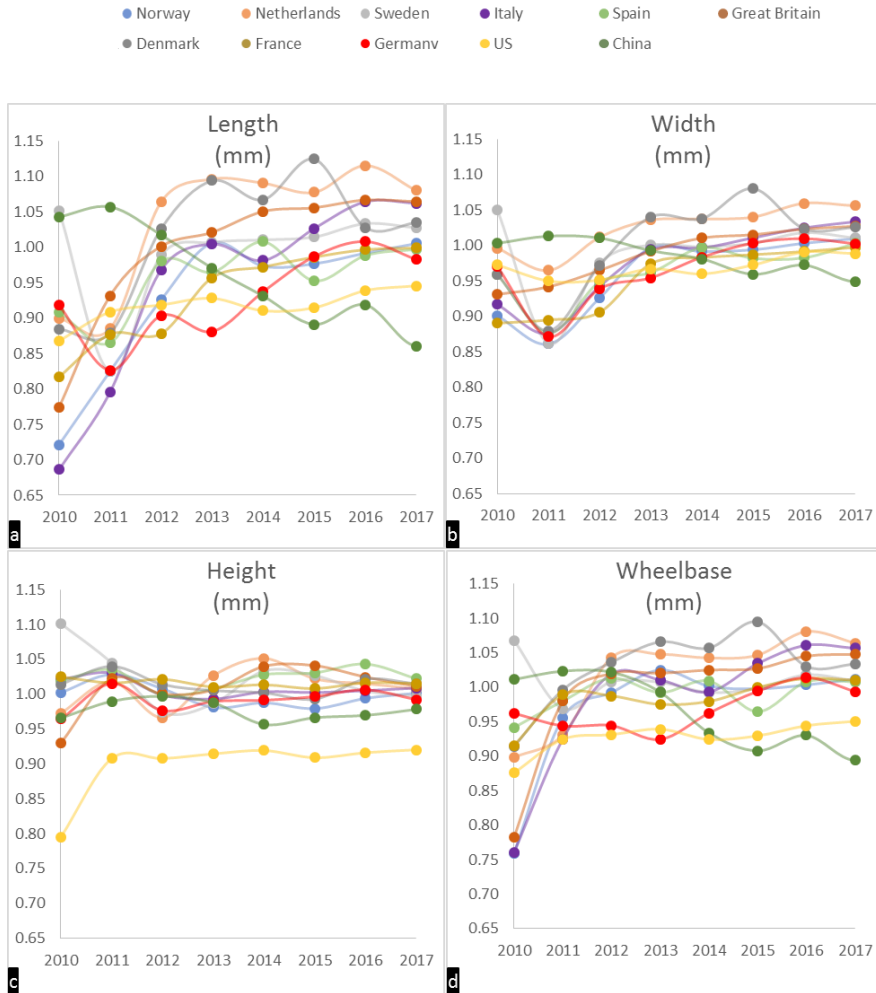


Figure A3. Evolution of the ratio of sales-weighted average new vehicle fleet summary statistics for PEV fleet divided by the overall fleet for: (a) length (mm), (b) width (mm), (c) height (mm) and (d) wheelbase (mm).

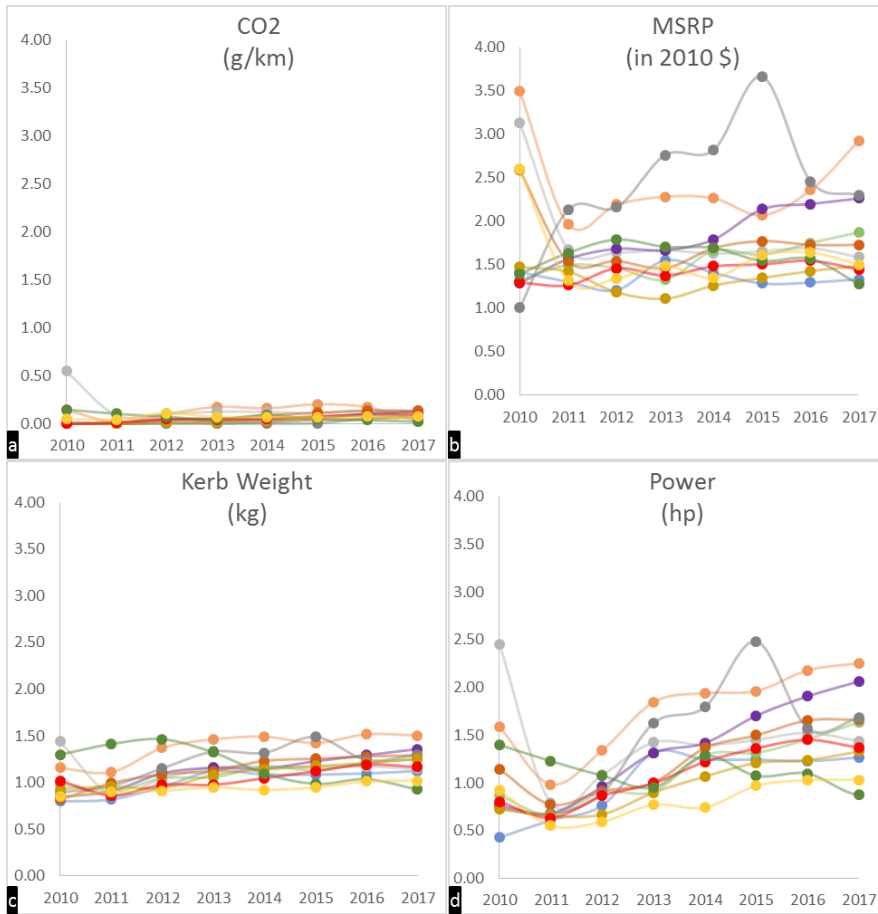


Figure A4. Evolution of the ratio of sales-weighted average new vehicle fleet summary statistics for PEV fleet divided by the overall fleet for: (a) tailpipe- CO_2 (g/km), (b) MSRP (in 2010 \$), (c) kerb weight (kg) and (d) horsepower (hp).



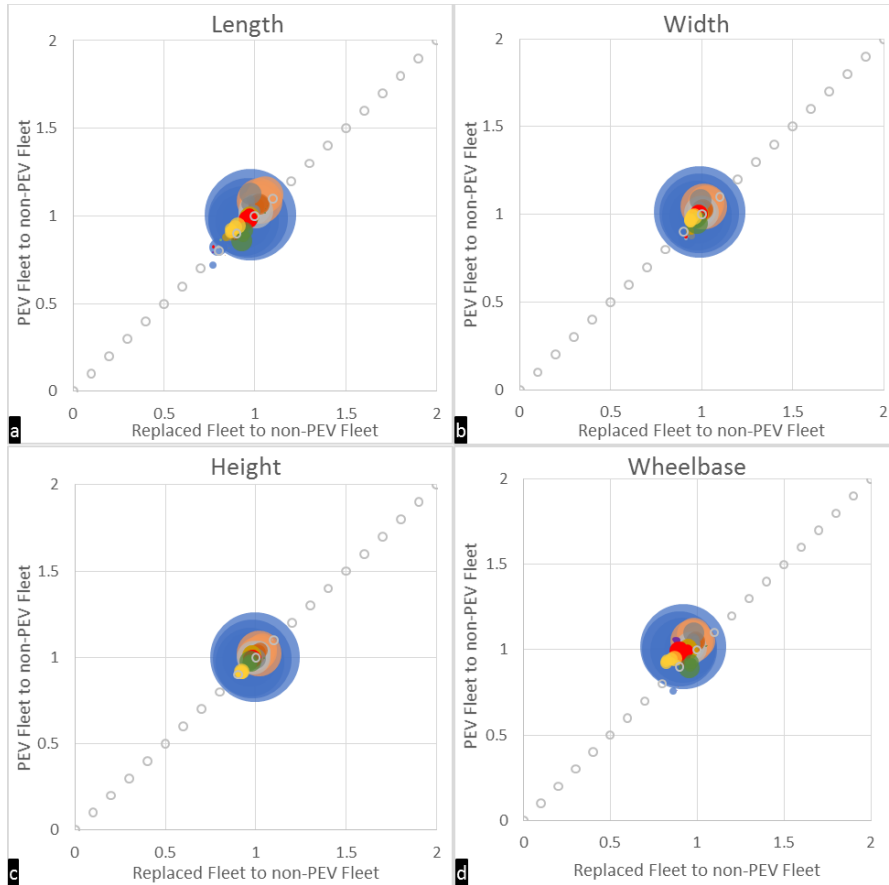


Figure A5. Ratio of average new vehicle fleet dimensions for PEV fleet (y-axis) and replaced fleet (x-axis); both normalized by non-PEV fleet for: (a) length, (b) width, (c) height and (d) wheelbase. The size of the bubble for each country is proportional to the market share of electric vehicles in new vehicle sales in that country corresponding to each year over the 2010-2017 time period. The largest bubble size represents a market share of ~38%.

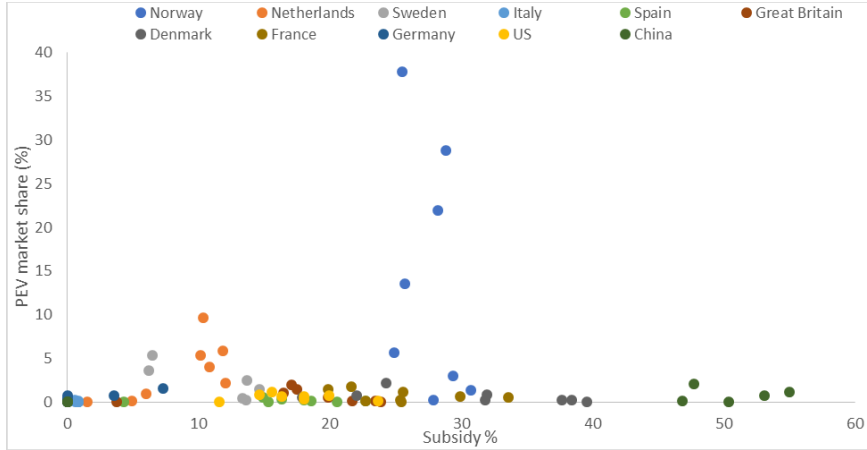


Figure A6. Variation in PEV market share (y-axis) with subsidy percentage on electric vehicles (x-axis)

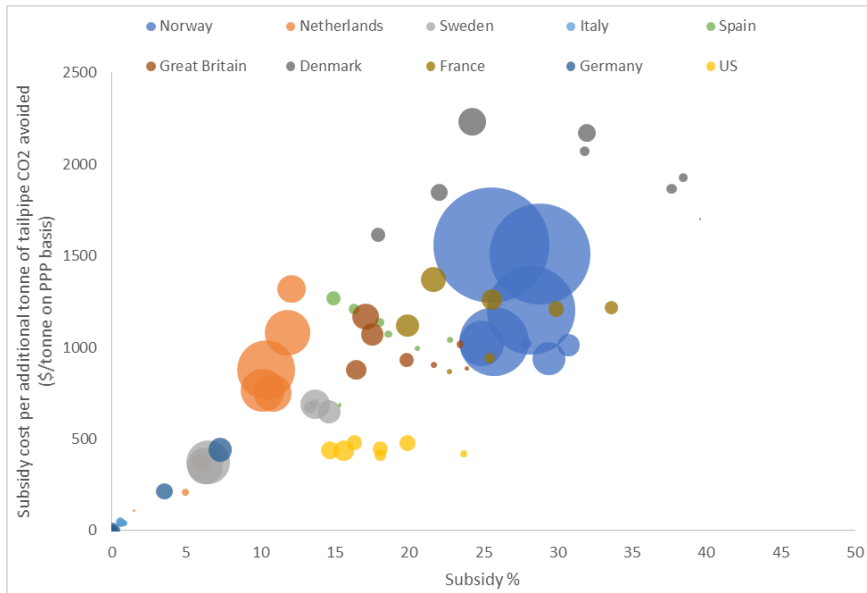


Figure A7. Variation in subsidy cost per *additional* tonne of tailpipe-CO₂ avoided (y-axis) with subsidy percentage on electric vehicles (x-axis). The size

of the bubble for each country is proportional to the market share of electric vehicles in new vehicle sales in that country corresponding to each year over the 2010-2017 time period. The largest bubble size represents a market share of ~38%.

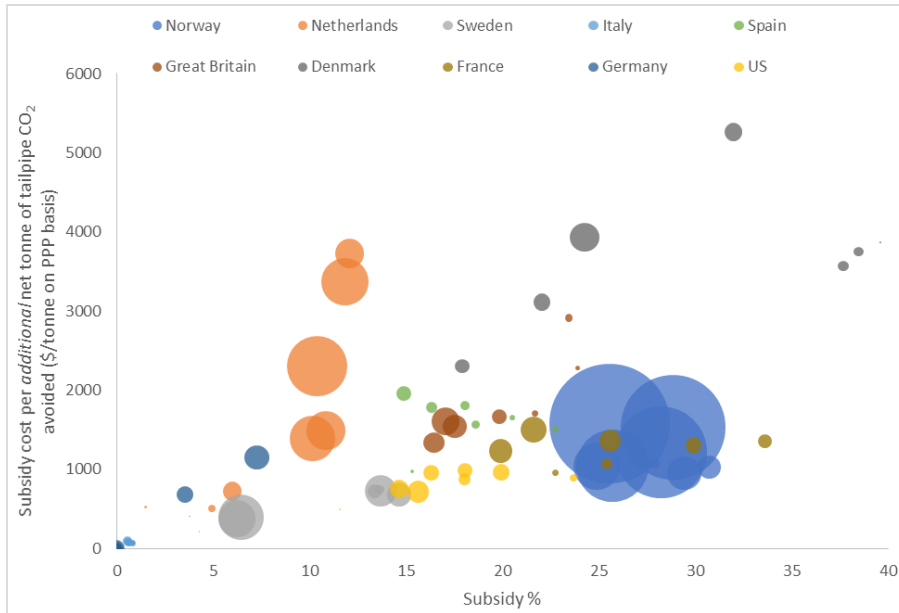


Figure A8. Variation in subsidy cost per *additional* net tonne of tailpipe-CO₂ avoided (y-axis) with subsidy percentage on electric vehicles (x-axis). The size of the bubble for each country is proportional to the market share of electric vehicles in new vehicle sales in that country corresponding to each year over the 2010-2017 time period. The largest bubble size represents a market share of ~38%.

Table corresponding to figure A1

Length											
Year	Norway	Netherlands	Sweden	Italy	Spain	Great Britain	Denmark	France	Germany	China	USA
2010	3178	3707	4693	2787	3896	3283	3692	3389	3969	4551	4257
2011	3637	3648	3689	3274	3730	3974	3682	3681	3604	4662	4455
2012	4081	4424	4430	3981	4213	4259	4165	3706	3938	4519	4488
2013	4441	4590	4513	4130	4141	4339	4442	4030	3838	4348	4543
2014	4300	4592	4535	4045	4325	4478	4385	4098	4096	4190	4461
2015	4327	4572	4566	4234	4089	4518	4655	4165	4323	4036	4489
2016	4423	4707	4651	4412	4252	4591	4304	4224	4429	4175	4620
2017	4518	4565	4648	4420	4296	4608	4366	4245	4326	3927	4646
Width											
Year	Norway	Netherlands	Sweden	Italy	Spain	Great Britain	Denmark	France	Germany	China	USA
2010	1611	1727	1887	1583	1698	1644	1675	1559	1722	1722	1815
2011	1541	1673	1554	1524	1558	1669	1536	1578	1554	1751	1778
2012	1659	1764	1760	1641	1686	1708	1674	1602	1675	1760	1778
2013	1791	1814	1806	1735	1708	1757	1795	1722	1703	1741	1811
2014	1781	1822	1804	1742	1772	1793	1802	1738	1759	1731	1800
2015	1790	1833	1819	1769	1747	1805	1882	1748	1800	1708	1829
2016	1816	1866	1848	1799	1753	1827	1792	1761	1816	1741	1867
2017	1838	1865	1841	1819	1793	1841	1804	1775	1806	1709	1865
Height											
Year	Norway	Netherlands	Sweden	Italy	Spain	Great Britain	Denmark	France	Germany	China	USA
2010	1554	1480	1687	1570	1557	1411	1543	1573	1485	1536	1303
2011	1594	1544	1604	1591	1585	1553	1584	1567	1569	1564	1490
2012	1566	1463	1496	1546	1532	1519	1534	1579	1512	1575	1482
2013	1521	1551	1517	1535	1544	1530	1516	1557	1528	1561	1496
2014	1527	1589	1593	1551	1578	1583	1513	1564	1530	1515	1508
2015	1515	1547	1585	1552	1586	1587	1499	1557	1539	1530	1500
2016	1549	1544	1549	1558	1607	1568	1545	1571	1558	1539	1520
2017	1561	1536	1543	1566	1578	1553	1541	1570	1542	1558	1530
Wheelbase											
Year	Norway	Netherlands	Sweden	Italy	Spain	Great Britain	Denmark	France	Germany	China	USA
2010	2010	2295	2857	1923	2463	2036	2350	2360	2538	2632	2541
2011	2539	2375	2601	2354	2569	2558	2568	2566	2503	2691	2687
2012	2641	2682	2710	2594	2653	2659	2633	2572	2504	2701	2699
2013	2732	2716	2724	2574	2600	2661	2713	2538	2452	2644	2730
2014	2675	2708	2690	2534	2645	2679	2708	2553	2559	2496	2693
2015	2669	2735	2712	2640	2529	2692	2822	2611	2651	2436	2716
2016	2695	2819	2770	2719	2646	2750	2671	2652	2712	2500	2766
2017	2743	2776	2768	2717	2652	2770	2693	2653	2664	2413	2780

Table corresponding to figure A2

CO2											
Year	Norway	Netherlands	Sweden	Italy	Spain	Great Britain	Denmark	France	Germany	China	USA
2010	3	19	83	0	0	0	0	0	0	28	22
2011	0	2	13	0	0	1	0	0	2	19	18
2012	1	12	15	4	6	6	0	1	7	13	44
2013	1	19	17	7	3	6	0	2	5	9	28
2014	2	17	16	5	6	11	0	3	7	16	27
2015	5	20	14	8	8	14	1	5	10	8	25
2016	10	18	17	12	10	17	6	6	12	6	30
2017	11	3	16	14	10	16	9	7	12	4	29
Power											
Year	Norway	Netherlands	Sweden	Italy	Spain	Great Britain	Denmark	France	Germany	China	USA
2010	51	171	344	77	99	141	77	74	105	163	208
2011	73	105	111	73	78	98	73	71	86	151	128
2012	95	147	152	101	104	115	87	74	119	136	138
2013	172	216	203	136	104	127	160	99	137	124	181
2014	172	229	204	147	148	176	183	118	171	173	175
2015	183	247	220	179	153	201	270	138	197	149	231
2016	196	267	237	206	175	232	177	146	216	156	247
2017	231	273	230	226	201	242	194	158	209	130	249
MSRP											
Year	Norway	Netherlands	Sweden	Italy	Spain	Great Britain	Denmark	France	Germany	China	USA
2010	41897	73670	90418	28216	33523	64880	17437	34811	38933	24409	70159
2011	44635	45290	56544	38879	41259	43018	40073	38842	42516	33932	37475
2012	42084	51624	55339	39457	38154	44157	35247	32353	47528	39745	39454
2013	56675	63723	60287	42917	36577	42688	50278	31546	47620	39798	45673
2014	52810	64186	58055	46527	47031	54892	54861	37217	53520	41319	43416
2015	40143	53125	49978	48167	38892	55962	61554	34405	47259	36949	53502
2016	43556	58338	51613	50256	43430	51734	43833	38171	50786	35768	56556
2017	54245	74940	52015	55521	49367	53482	46589	42212	50534	31354	53824
Curb Weight											
Year	Norway	Netherlands	Sweden	Italy	Spain	Great Britain	Denmark	France	Germany	China	USA
2010	1147	1337	2179	1036	1336	1092	1157	1172	1444	1672	1501
2011	1177	1279	1333	1149	1232	1343	1252	1224	1245	1852	1604
2012	1364	1603	1602	1391	1413	1464	1408	1219	1412	1942	1605
2013	1610	1741	1775	1463	1403	1502	1604	1374	1404	1779	1676
2014	1568	1771	1796	1448	1538	1645	1611	1434	1506	1496	1632
2015	1608	1740	1807	1551	1495	1691	1843	1488	1618	1365	1690
2016	1666	1819	1810	1642	1600	1757	1569	1540	1731	1450	1811
2017	1787	1795	1800	1737	1656	1788	1664	1597	1693	1327	1822

Table corresponding to figure A3

Length											
Year	Norway	Netherlands	Sweden	Italy	Spain	Great Britain	Denmark	France	Germany	China	USA
2010	0.72	0.90	1.05	0.69	0.91	0.77	0.88	0.82	0.92	1.04	0.87
2011	0.83	0.89	0.82	0.80	0.87	0.93	0.88	0.88	0.83	1.06	0.91
2012	0.93	1.06	0.99	0.97	0.98	1.00	1.03	0.88	0.90	1.02	0.92
2013	1.01	1.10	1.01	1.00	0.96	1.02	1.09	0.96	0.88	0.97	0.93
2014	0.97	1.09	1.01	0.98	1.01	1.05	1.07	0.97	0.94	0.93	0.91
2015	0.98	1.08	1.01	1.03	0.95	1.06	1.12	0.99	0.99	0.89	0.91
2016	0.99	1.12	1.03	1.06	0.99	1.07	1.03	1.00	1.01	0.92	0.94
2017	1.01	1.08	1.03	1.06	1.00	1.06	1.03	1.00	0.98	0.86	0.95
Width											
Year	Norway	Netherlands	Sweden	Italy	Spain	Great Britain	Denmark	France	Germany	China	USA
2010	0.90	1.00	1.05	0.92	0.96	0.93	0.96	0.89	0.97	1.00	0.97
2011	0.86	0.96	0.86	0.88	0.88	0.94	0.88	0.90	0.87	1.01	0.95
2012	0.93	1.01	0.98	0.94	0.95	0.96	0.97	0.91	0.94	1.01	0.95
2013	1.00	1.04	1.00	0.99	0.96	0.99	1.04	0.97	0.95	0.99	0.97
2014	0.99	1.04	1.00	1.00	1.00	1.01	1.04	0.98	0.98	0.98	0.96
2015	0.99	1.04	1.00	1.01	0.98	1.02	1.08	0.99	1.00	0.96	0.97
2016	1.00	1.06	1.02	1.02	0.98	1.02	1.02	0.99	1.01	0.97	0.99
2017	1.01	1.06	1.01	1.03	1.00	1.03	1.03	1.00	1.00	0.95	0.99
Height											
Year	Norway	Netherlands	Sweden	Italy	Spain	Great Britain	Denmark	France	Germany	China	USA
2010	1.00	0.97	1.10	1.02	1.02	0.93	1.01	1.03	0.96	0.97	0.80
2011	1.03	1.02	1.05	1.03	1.04	1.02	1.04	1.02	1.02	0.99	0.91
2012	1.01	0.97	0.97	1.00	1.00	1.00	1.01	1.02	0.98	1.00	0.91
2013	0.98	1.03	0.99	0.99	1.01	1.01	1.01	1.01	0.99	0.99	0.91
2014	0.99	1.05	1.03	1.00	1.03	1.04	1.00	1.01	0.99	0.96	0.92
2015	0.98	1.02	1.03	1.00	1.03	1.04	0.99	1.01	1.00	0.97	0.91
2016	0.99	1.02	1.00	1.01	1.04	1.02	1.02	1.02	1.01	0.97	0.92
2017	1.00	1.01	1.00	1.01	1.02	1.01	1.02	1.02	0.99	0.98	0.92
Wheelbase											
Year	Norway	Netherlands	Sweden	Italy	Spain	Great Britain	Denmark	France	Germany	China	USA
2010	0.76	0.90	1.07	0.76	0.94	0.78	0.91	0.92	0.96	1.01	0.88
2011	0.96	0.93	0.97	0.92	0.98	0.98	1.00	0.99	0.94	1.02	0.92
2012	0.99	1.04	1.01	1.02	1.01	1.02	1.04	0.99	0.94	1.02	0.93
2013	1.03	1.05	1.01	1.01	0.99	1.02	1.07	0.98	0.92	0.99	0.94
2014	1.00	1.04	0.99	0.99	1.01	1.03	1.06	0.98	0.96	0.93	0.92
2015	1.00	1.05	1.00	1.03	0.96	1.03	1.10	1.00	0.99	0.91	0.93
2016	1.00	1.08	1.02	1.06	1.01	1.05	1.03	1.01	1.01	0.93	0.94
2017	1.01	1.06	1.01	1.06	1.01	1.05	1.03	1.01	0.99	0.89	0.95

Table corresponding to figure A4

CO2											
Year	Norway	Netherlands	Sweden	Italy	Spain	Great Britain	Denmark	France	Germany	China	USA
2010	0.02	0.14	0.55	0.00	0.00	0.00	0.00	0.00	0.00	0.15	0.05
2011	0.00	0.02	0.09	0.00	0.00	0.00	0.00	0.00	0.01	0.11	0.04
2012	0.01	0.10	0.11	0.04	0.04	0.05	0.00	0.01	0.05	0.07	0.11
2013	0.01	0.18	0.13	0.06	0.02	0.05	0.00	0.02	0.04	0.05	0.07
2014	0.02	0.16	0.12	0.04	0.05	0.09	0.00	0.03	0.05	0.09	0.07
2015	0.05	0.20	0.11	0.07	0.07	0.12	0.01	0.05	0.08	0.05	0.07
2016	0.11	0.17	0.14	0.10	0.09	0.14	0.06	0.05	0.09	0.04	0.08
2017	0.13	0.03	0.14	0.12	0.09	0.13	0.09	0.07	0.09	0.02	0.08
Power											
Year	Norway	Netherlands	Sweden	Italy	Spain	Great Britain	Denmark	France	Germany	China	USA
2010	0.43	1.59	2.45	0.76	0.87	1.14	0.73	0.73	0.81	1.40	0.92
2011	0.61	0.99	0.79	0.68	0.66	0.77	0.68	0.65	0.63	1.23	0.55
2012	0.76	1.34	1.08	0.96	0.90	0.91	0.89	0.67	0.86	1.08	0.59
2013	1.32	1.85	1.42	1.31	0.91	1.00	1.63	0.90	1.00	0.95	0.77
2014	1.25	1.94	1.40	1.42	1.29	1.37	1.79	1.07	1.22	1.28	0.74
2015	1.24	1.96	1.45	1.70	1.32	1.50	2.48	1.21	1.36	1.07	0.97
2016	1.23	2.18	1.53	1.91	1.46	1.65	1.57	1.24	1.45	1.10	1.03
2017	1.27	2.26	1.44	2.06	1.64	1.66	1.68	1.33	1.37	0.87	1.03
MSRP											
Year	Norway	Netherlands	Sweden	Italy	Spain	Great Britain	Denmark	France	Germany	China	USA
2010	1.41	3.49	3.13	1.28	1.32	2.58	1.00	1.47	1.29	1.39	2.59
2011	1.30	1.96	1.67	1.56	1.49	1.53	2.13	1.42	1.26	1.63	1.31
2012	1.21	2.19	1.64	1.68	1.46	1.54	2.15	1.18	1.46	1.79	1.34
2013	1.55	2.28	1.66	1.66	1.33	1.46	2.76	1.11	1.37	1.70	1.48
2014	1.40	2.26	1.62	1.79	1.66	1.69	2.81	1.26	1.48	1.69	1.34
2015	1.28	2.07	1.65	2.13	1.61	1.77	3.66	1.34	1.50	1.54	1.61
2016	1.29	2.35	1.69	2.19	1.75	1.73	2.45	1.42	1.54	1.57	1.64
2017	1.33	2.92	1.58	2.26	1.87	1.72	2.30	1.48	1.44	1.27	1.50
Curb Weight											
Year	Norway	Netherlands	Sweden	Italy	Spain	Great Britain	Denmark	France	Germany	China	USA
2010	0.80	1.16	1.44	0.84	0.99	0.82	0.90	0.93	1.02	1.30	0.85
2011	0.82	1.11	0.87	0.91	0.90	0.99	0.96	0.96	0.86	1.41	0.90
2012	0.95	1.37	1.05	1.10	1.04	1.09	1.15	0.94	0.97	1.46	0.91
2013	1.12	1.46	1.16	1.16	1.06	1.12	1.33	1.08	0.98	1.32	0.95
2014	1.09	1.49	1.17	1.15	1.17	1.23	1.32	1.14	1.05	1.10	0.92
2015	1.08	1.42	1.17	1.23	1.13	1.25	1.49	1.18	1.12	0.99	0.95
2016	1.10	1.52	1.17	1.29	1.21	1.28	1.24	1.21	1.19	1.04	1.01
2017	1.12	1.50	1.15	1.36	1.25	1.29	1.30	1.25	1.17	0.93	1.02

Table corresponding to figure A5 (x-axis)

Length (Replaced fleet to non-PEV fleet) (x axis)											
Year	Norway	Netherlands	Sweden	Italy	Spain	Great Britain	Denmark	France	Germany	China	USA
2010	0.77	0.91	0.98	0.81	0.92	0.84	0.92	0.86	0.89	1.06	0.89
2011	0.80	0.89	0.80	0.77	0.81	0.90	0.87	0.87	0.77	1.07	0.87
2012	0.87	0.95	0.92	0.88	0.92	0.93	0.99	0.84	0.87	1.06	0.86
2013	0.93	1.04	0.99	0.95	0.94	0.96	0.98	0.94	0.89	1.01	0.87
2014	0.94	1.03	0.99	0.95	0.98	1.00	0.96	0.95	0.93	0.96	0.87
2015	0.94	1.03	0.98	0.97	0.95	1.01	0.97	0.96	0.96	0.93	0.87
2016	0.96	1.05	1.01	0.99	0.96	1.03	0.99	0.96	0.97	0.95	0.89
2017	0.97	0.98	1.01	1.00	0.97	1.02	0.99	0.97	0.96	0.93	0.91
Width (Replaced fleet to non-PEV fleet) (x axis)											
Year	Norway	Netherlands	Sweden	Italy	Spain	Great Britain	Denmark	France	Germany	China	USA
2010	0.91	0.97	1.01	0.93	0.97	0.93	0.97	0.94	0.95	1.03	0.96
2011	0.92	0.96	0.91	0.92	0.93	0.96	0.94	0.95	0.91	1.03	0.94
2012	0.95	0.98	0.97	0.96	0.96	0.97	0.99	0.93	0.95	1.02	0.94
2013	0.97	1.02	0.99	0.98	0.97	0.98	0.99	0.97	0.96	1.00	0.94
2014	0.97	1.02	1.00	0.98	0.99	1.00	0.99	0.98	0.97	0.98	0.94
2015	0.97	1.01	1.00	0.99	0.98	1.01	0.99	0.98	0.98	0.97	0.94
2016	0.98	1.02	1.00	1.00	0.99	1.01	1.00	0.98	0.99	0.98	0.95
2017	0.99	0.99	1.00	1.00	0.99	1.01	1.00	0.99	0.98	0.97	0.96
Height (Replaced fleet to non-PEV fleet) (x axis)											
Year	Norway	Netherlands	Sweden	Italy	Spain	Great Britain	Denmark	France	Germany	China	USA
2010	0.96	0.98	1.09	0.97	0.97	0.95	0.98	0.96	0.97	0.95	0.85
2011	0.96	0.97	0.97	0.97	0.98	0.98	0.97	0.96	0.97	1.01	0.92
2012	0.96	0.98	0.97	0.97	0.97	0.98	0.97	0.96	0.96	1.05	0.92
2013	0.95	1.02	0.98	0.97	0.97	0.97	0.99	0.97	0.96	1.02	0.92
2014	0.97	1.04	1.03	0.98	0.99	1.02	0.99	0.97	0.97	0.97	0.92
2015	0.97	1.02	1.02	0.98	1.00	1.02	0.99	0.98	0.97	0.97	0.91
2016	0.98	1.00	1.00	1.00	1.00	1.01	0.99	0.98	0.98	0.97	0.92
2017	0.99	1.00	0.99	1.00	0.99	0.99	1.00	0.98	0.98	0.97	0.92
Wheelbase (Replaced fleet to non-PEV fleet) (x axis)											
Year	Norway	Netherlands	Sweden	Italy	Spain	Great Britain	Denmark	France	Germany	China	USA
2010	0.86	0.94	0.99	0.89	0.95	0.89	0.96	0.92	0.93	1.03	0.91
2011	0.88	0.94	0.89	0.85	0.88	0.94	0.93	0.93	0.85	1.06	0.89
2012	0.93	0.97	0.96	0.92	0.95	0.96	1.00	0.90	0.91	1.05	0.85
2013	0.96	1.01	0.99	0.97	0.96	0.98	0.99	0.96	0.92	1.02	0.83
2014	0.96	1.00	0.99	0.96	0.95	0.99	0.98	0.97	0.94	0.98	0.82
2015	0.92	0.97	0.97	0.94	0.92	0.99	0.98	0.97	0.94	0.96	0.82
2016	0.90	0.98	0.97	0.87	0.92	0.99	0.98	0.95	0.91	0.97	0.85
2017	0.92	0.97	0.97	0.88	0.92	0.99	0.98	0.95	0.89	0.95	0.87

Table corresponding to figure A5 (y-axis)

Length (PEV fleet to non-PEV fleet) (y axis)											
Year	Norway	Netherlands	Sweden	Italy	Spain	Great Britain	Denmark	France	Germany	China	USA
2010	0.721	0.899	1.051	0.686	0.908	0.774	0.884	0.817	0.918	1.043	0.868
2011	0.823	0.885	0.824	0.796	0.865	0.931	0.878	0.877	0.826	1.057	0.908
2012	0.924	1.064	0.989	0.968	0.980	1.001	1.026	0.878	0.903	1.017	0.918
2013	1.006	1.102	1.007	1.004	0.965	1.021	1.094	0.957	0.881	0.970	0.927
2014	0.969	1.094	1.010	0.981	1.008	1.051	1.068	0.972	0.937	0.931	0.910
2015	0.970	1.086	1.015	1.026	0.952	1.056	1.127	0.986	0.987	0.890	0.914
2016	0.988	1.123	1.035	1.064	0.988	1.068	1.028	0.996	1.008	0.918	0.938
2017	1.008	1.082	1.029	1.062	0.997	1.066	1.035	0.999	0.982	0.858	0.945
Width (PEV fleet to non-PEV fleet) (y axis)											
Year	Norway	Netherlands	Sweden	Italy	Spain	Great Britain	Denmark	France	Germany	China	USA
2010	0.90	1.00	1.05	0.92	0.96	0.93	0.96	0.89	0.97	1.00	0.97
2011	0.86	0.96	0.86	0.88	0.88	0.94	0.88	0.89	0.87	1.01	0.95
2012	0.92	1.01	0.98	0.94	0.95	0.96	0.97	0.91	0.94	1.01	0.95
2013	1.00	1.04	1.00	0.99	0.96	0.99	1.04	0.97	0.95	0.99	0.97
2014	0.99	1.04	1.00	1.00	1.00	1.01	1.04	0.98	0.98	0.98	0.96
2015	0.99	1.04	1.00	1.01	0.98	1.02	1.08	0.99	1.00	0.96	0.97
2016	1.00	1.06	1.02	1.02	0.98	1.02	1.02	0.99	1.01	0.97	0.99
2017	1.02	1.06	1.01	1.03	1.00	1.03	1.03	1.00	1.00	0.95	0.99
Height (PEV fleet to non-PEV fleet) (y axis)											
Year	Norway	Netherlands	Sweden	Italy	Spain	Great Britain	Denmark	France	Germany	China	USA
2010	1.00	0.97	1.10	1.02	1.02	0.93	1.01	1.03	0.96	0.97	0.80
2011	1.03	1.02	1.05	1.03	1.04	1.02	1.04	1.02	1.02	0.99	0.91
2012	1.01	0.97	0.97	1.00	1.00	1.00	1.01	1.02	0.98	1.00	0.91
2013	0.98	1.03	0.99	0.99	1.01	1.01	1.01	1.01	0.99	0.99	0.91
2014	0.99	1.05	1.03	1.00	1.03	1.04	1.00	1.01	0.99	0.96	0.92
2015	0.97	1.02	1.03	1.00	1.03	1.04	0.99	1.01	1.00	0.97	0.91
2016	0.99	1.02	1.00	1.01	1.04	1.03	1.02	1.02	1.01	0.97	0.92
2017	1.00	1.01	1.00	1.01	1.02	1.01	1.02	1.02	0.99	0.98	0.92
Wheelbase (PEV fleet to non-PEV fleet) (y axis)											
Year	Norway	Netherlands	Sweden	Italy	Spain	Great Britain	Denmark	France	Germany	China	USA
2010	0.76	0.90	1.07	0.76	0.94	0.78	0.91	0.92	0.96	1.01	0.88
2011	0.96	0.93	0.97	0.92	0.98	0.98	1.00	0.99	0.94	1.02	0.92
2012	0.99	1.04	1.01	1.02	1.01	1.02	1.04	0.99	0.94	1.02	0.93
2013	1.03	1.05	1.01	1.01	0.99	1.02	1.07	0.98	0.92	0.99	0.94
2014	1.00	1.04	0.99	0.99	1.01	1.03	1.06	0.98	0.96	0.93	0.92
2015	1.00	1.05	1.00	1.03	0.96	1.03	1.10	1.00	0.99	0.91	0.93
2016	1.00	1.09	1.02	1.06	1.01	1.05	1.03	1.01	1.01	0.93	0.94
2017	1.02	1.07	1.01	1.06	1.01	1.05	1.03	1.01	0.99	0.89	0.95

Table corresponding to figure A6 (x-axis)

Subsidy % (x axis)											
Year	Norway	Netherlands	Sweden	Italy	Spain	Great Britain	Denmark	France	Germany	China	USA
2010	27.89	1.48	0.00	0.82	4.29	3.77	39.59	25.46	0.00	0.00	11.56
2011	30.72	4.92	0.00	0.66	15.30	23.90	38.44	22.73	0.00	0.00	23.69
2012	29.42	5.99	13.63	0.83	20.52	21.68	37.66	25.40	0.00	0.00	18.05
2013	24.88	10.13	13.35	0.80	22.75	23.44	31.83	33.59	0.00	50.41	18.04
2014	25.71	10.83	14.63	0.80	18.60	19.84	31.96	29.90	0.00	46.83	19.91
2015	28.20	10.38	13.68	0.60	18.05	16.44	24.25	25.59	0.00	53.11	16.31
2016	28.82	11.81	6.24	0.58	16.31	17.52	22.03	19.89	3.52	55.03	14.66
2017	25.54	12.07	6.45	0.55	14.90	17.05	17.89	21.62	7.28	47.76	15.61

Table corresponding to figure A6 (y-axis)

PEV Market Share											
Year	Norway	Netherlands	Sweden	Italy	Spain	Great Britain	Denmark	France	Germany	China	USA
2010	0.273%	0.022%	0.012%	0.002%	0.004%	0.007%	0.010%	0.005%	0.002%	0.003%	0.005%
2011	1.415%	0.149%	0.050%	0.015%	0.041%	0.056%	0.247%	0.097%	0.051%	0.006%	0.139%
2012	3.035%	0.978%	0.202%	0.048%	0.080%	0.110%	0.289%	0.296%	0.124%	0.020%	0.387%
2013	5.697%	5.378%	0.494%	0.094%	0.124%	0.158%	0.283%	0.515%	0.265%	0.020%	0.625%
2014	13.556%	4.014%	1.522%	0.110%	0.168%	0.590%	0.855%	0.702%	0.438%	0.194%	0.738%
2015	21.987%	9.693%	2.517%	0.149%	0.221%	1.104%	2.205%	1.197%	0.732%	0.800%	0.670%
2016	28.763%	5.907%	3.648%	0.151%	0.323%	1.447%	0.768%	1.455%	0.744%	1.181%	0.878%
2017	37.775%	2.215%	5.411%	0.244%	0.585%	1.977%	0.549%	1.760%	1.586%	2.123%	1.215%

Table corresponding to figure A7 (x-axis)

Subsidy % (x axis)										
Year	Norway	Netherlands	Sweden	Italy	Spain	Great Britain	Denmark	France	Germany	USA
2010	27.89	1.48	0.00	0.82	4.29	3.77	39.59	25.46	0.00	11.56
2011	30.72	4.92	0.00	0.66	15.30	23.90	38.44	22.73	0.00	23.69
2012	29.42	5.99	13.63	0.83	20.52	21.68	37.66	25.40	0.00	18.05
2013	24.88	10.13	13.35	0.80	22.75	23.44	31.83	33.59	0.00	18.04
2014	25.71	10.83	14.63	0.80	18.60	19.84	31.96	29.90	0.00	19.91
2015	28.20	10.38	13.68	0.60	18.05	16.44	24.25	25.59	0.00	16.31
2016	28.82	11.81	6.24	0.58	16.31	17.52	22.03	19.89	3.52	14.66
2017	25.54	12.07	6.45	0.55	14.90	17.05	17.89	21.62	7.28	15.61

Table corresponding to figure A7 (y-axis)

Subsidy cost per additional tonne of tailpipe CO2 avoided (\$/tonne on PPP basis) (y axis)										
Year	Norway	Netherlands	Sweden	Italy	Spain	Great Britain	Denmark	France	Germany	USA
2010	1022.307	108.277	0.000	24.806	144.455	217.055	1700.370	957.430	0.000	308.994
2011	1012.323	210.303	0.000	28.140	685.520	885.576	1927.010	868.661	0.000	420.076
2012	938.855	370.189	695.935	39.013	994.366	905.072	1865.234	941.968	0.000	410.205
2013	1022.143	765.957	673.212	40.276	1041.114	1018.037	2072.811	1215.390	0.000	446.736
2014	1031.932	751.724	646.946	40.070	1073.548	931.135	2171.291	1210.024	0.000	476.668
2015	1203.031	877.739	691.427	41.245	1137.380	878.725	2231.696	1261.961	0.000	481.571
2016	1510.196	1080.436	353.302	45.564	1208.889	1070.131	1846.730	1120.512	215.173	437.631
2017	1559.209	1318.625	372.152	48.621	1267.012	1169.103	1616.281	1369.282	442.203	437.732

Table corresponding to figure A8 (x-axis)

Subsidy % (x axis)										
Year	Norway	Netherlands	Sweden	Italy	Spain	Great Britain	Denmark	France	Germany	USA
2010	27.89	1.48	0.00	0.82	4.29	3.77	39.59	25.46	0.00	11.56
2011	30.72	4.92	0.00	0.66	15.30	23.90	38.44	22.73	0.00	23.69
2012	29.42	5.99	13.63	0.83	20.52	21.68	37.66	25.40	0.00	18.05
2013	24.88	10.13	13.35	0.80	22.75	23.44	31.83	33.59	0.00	18.04
2014	25.71	10.83	14.63	0.80	18.60	19.84	31.96	29.90	0.00	19.91
2015	28.20	10.38	13.68	0.60	18.05	16.44	24.25	25.59	0.00	16.31
2016	28.82	11.81	6.24	0.58	16.31	17.52	22.03	19.89	3.52	14.66
2017	25.54	12.07	6.45	0.55	14.90	17.05	17.89	21.62	7.28	15.61

Table corresponding to figure A8 (y-axis)

Subsidy cost per additional net tonne of tailpipe CO2 avoided (\$/tonne on PPP basis) (y axis)										
Year	Norway	Netherlands	Sweden	Italy	Spain	Great Britain	Denmark	France	Germany	USA
2010	1072.649	523.145	0.000	41.691	213.158	407.178	3872.373	1057.022	0.000	495.292
2011	1032.352	509.230	0.000	46.629	977.009	2279.244	3752.025	955.846	0.000	895.689
2012	949.643	721.628	748.220	73.312	1650.124	1701.309	3566.742	1066.896	0.000	871.034
2013	1037.006	1387.096	721.772	72.668	1505.864	2915.134	8176.112	1359.937	0.000	985.520
2014	1044.884	1490.799	678.542	68.081	1566.557	1662.143	5261.087	1298.877	0.000	960.984
2015	1218.424	2305.561	726.896	70.336	1810.856	1334.861	3930.632	1360.667	0.000	954.200
2016	1528.012	3366.638	376.931	86.557	1784.888	1545.361	3109.671	1233.895	681.045	754.648
2017	1578.685	3725.249	394.902	92.561	1959.104	1605.890	2303.856	1505.578	1148.317	717.767