

Assessing the impacts of shutdown of TEPCO's nuclear reactors on CO₂ emission in the Japan's electricity sector

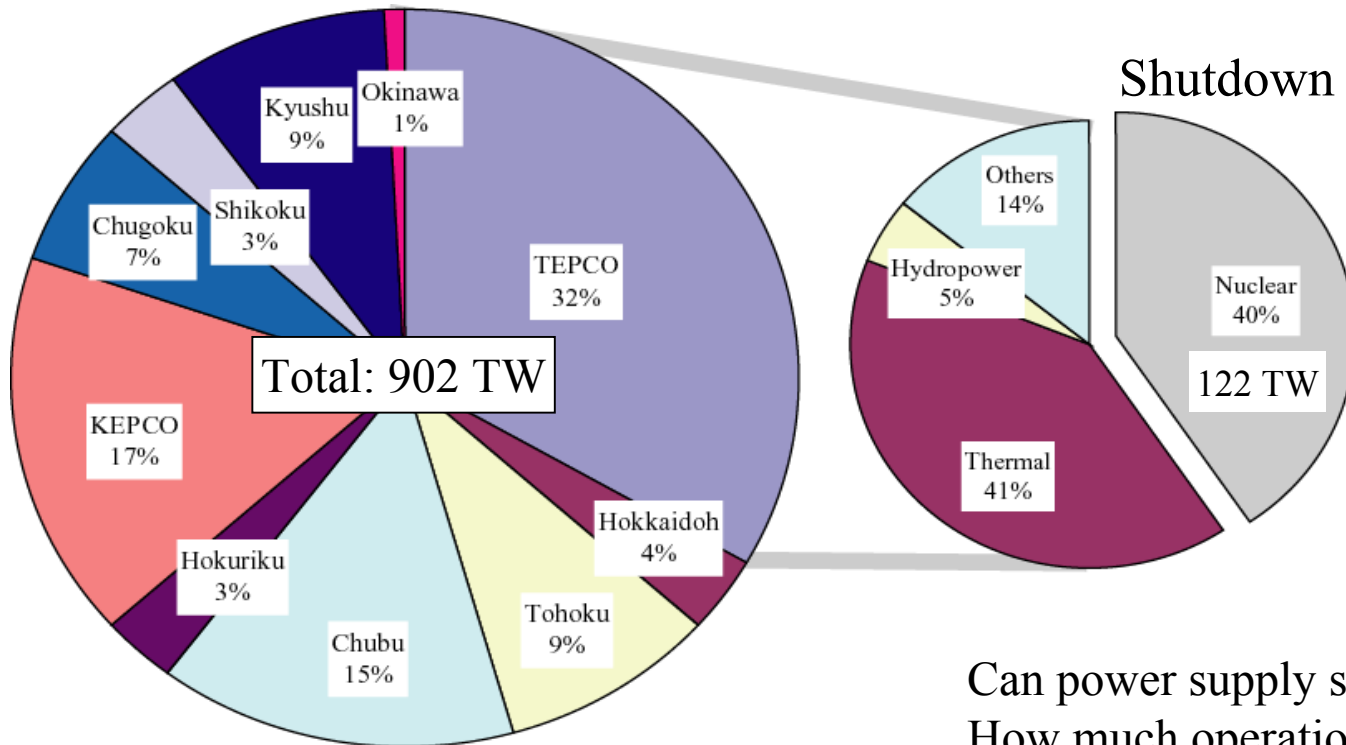
Shuichi Ashina

Toshihiko Nakata

Tohoku University, Japan

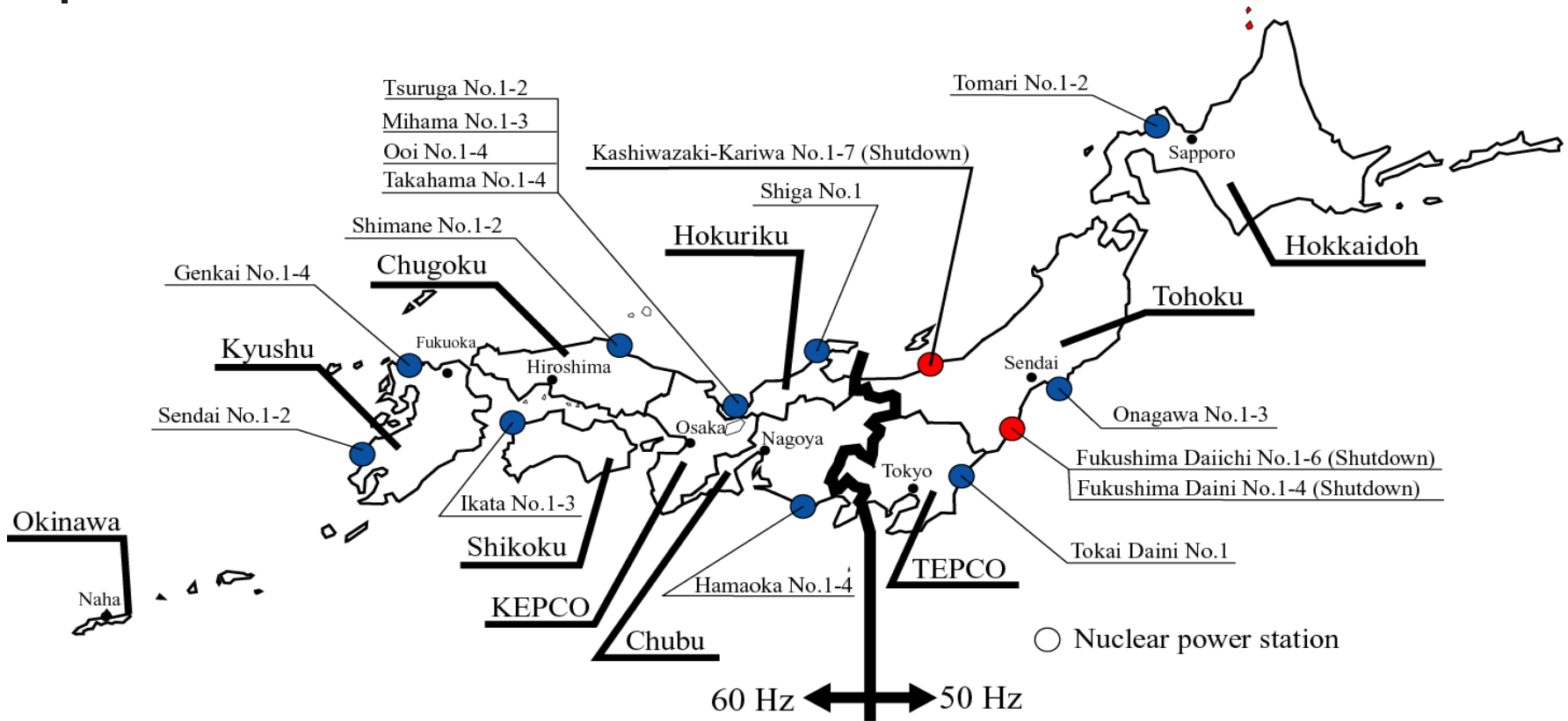
Background

Electricity generation in Japan



Can power supply stability be assured?
How much operation cost rise?
How much CO₂ emission increase?

Nuclear power stations in Japan



Number of nuclear power plants: 52

Total installed capacity of nuclear power plants: 45,617 MW



Purpose

- Analyze the impacts of shutdown of nuclear power plants at Tokyo Electric Power Company (TEPCO) on energy systems in Japan.
- Evaluate electricity supply security, operation cost and CO₂ emission.

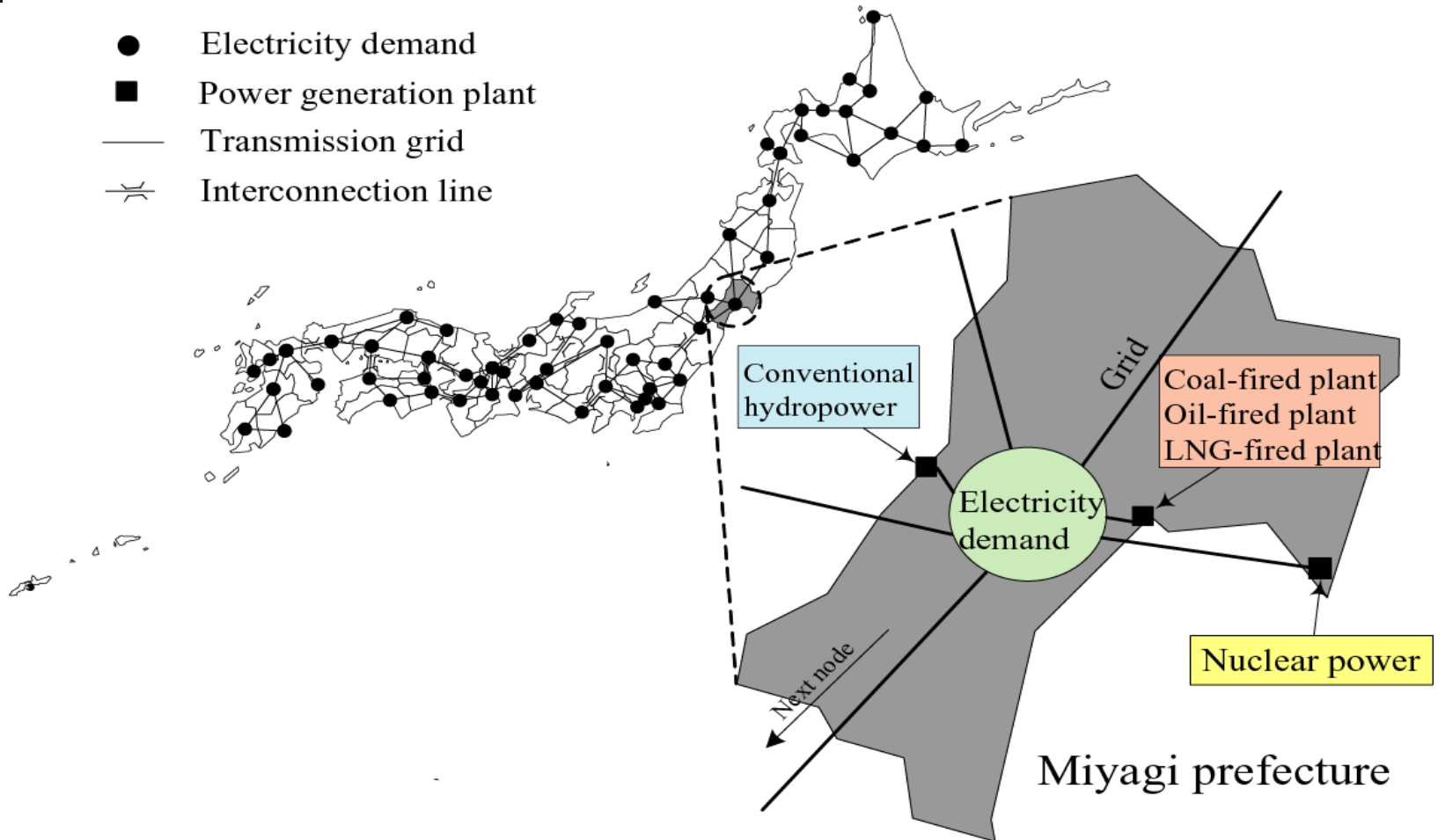


Methodology of the analysis

- Consider the site of power plants and the distribution of regional electricity consumption.
- Separate Japan into sixty regions.
- Include transmission grids and its capacity limits.

Schematic structure of the Multi Node Model

- Electricity demand
- Power generation plant
- Transmission grid
- ≡ Interconnection line





Objective function

$$\min TC = \sum_{P,T,R} (V(P,T,R))$$

TC: Total Operation and maintenance cost.
P: Pattern (1-7).
T: Time (1-24).
R: Region (1-60).
V: Operation and maintenance cost

- Operation and maintenance (O&M) costs are considered according to amount of dispatches.



Demand patterns

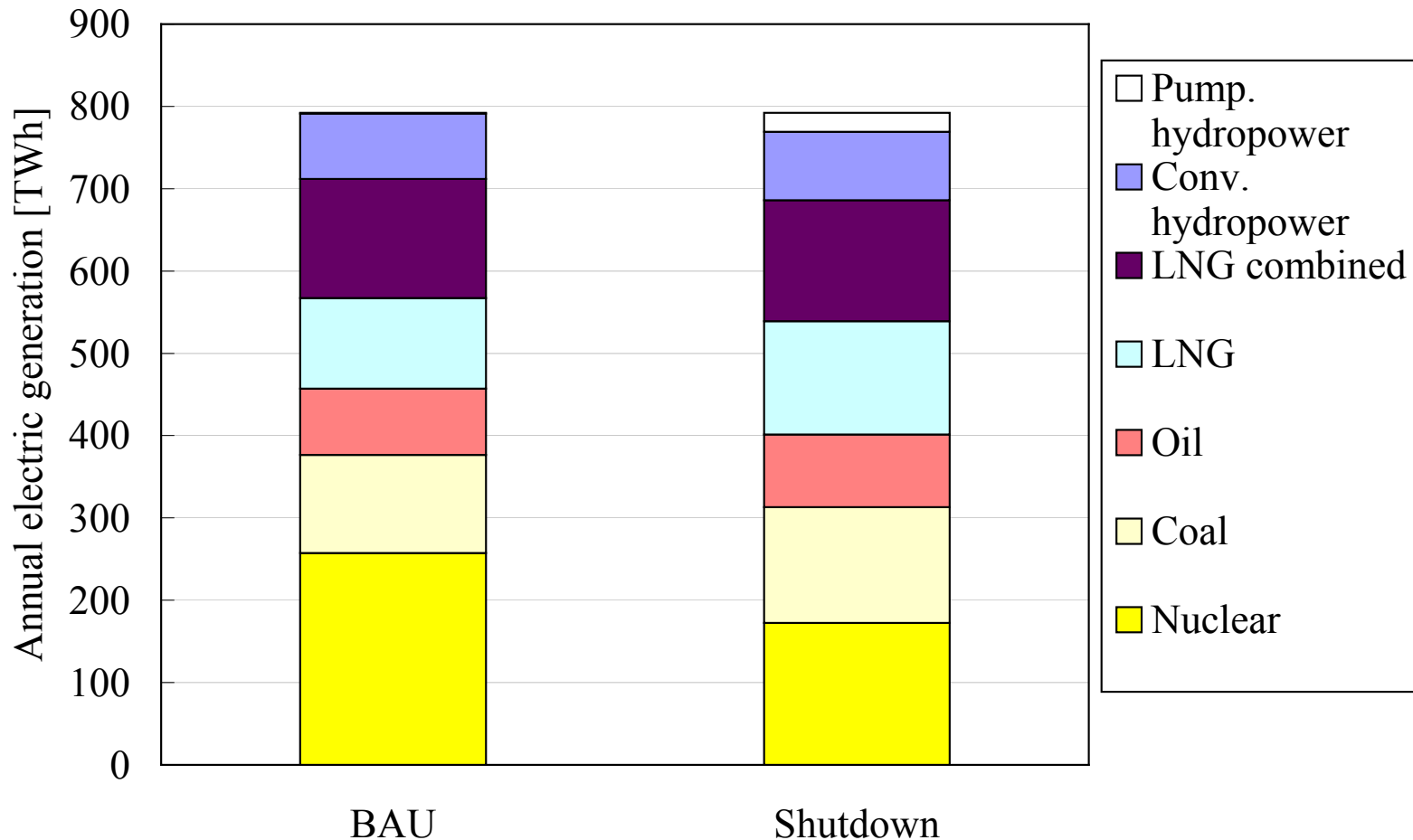
	Demand pattern	Days in a year
A	Maximum demand days in Summer	3
B	Weekdays in Summer	98
C	Weekdays in Winter	95
D	Weekdays in Spring and Autumn	97
E	Holidays in Summer	21
F	Holidays in Winter	26
G	Holidays in Spring and Autumn	25



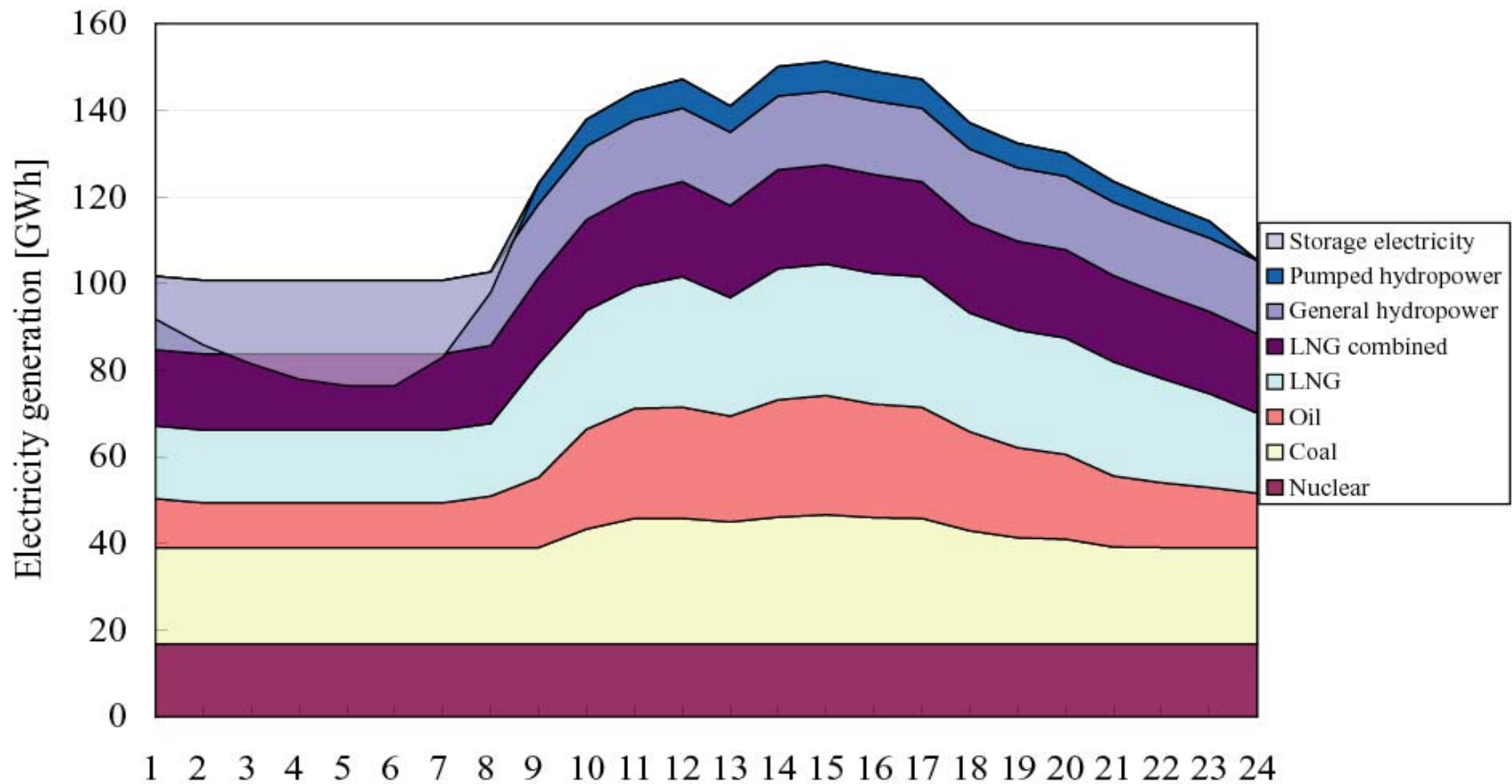
Analyzed scenarios

- Business as Usual scenario (BAU scenario)
 - All 17 nuclear power plants at TEPCO are in operation.
- Shutdown scenario
 - Shutdown of all nuclear power plants at TEPCO.

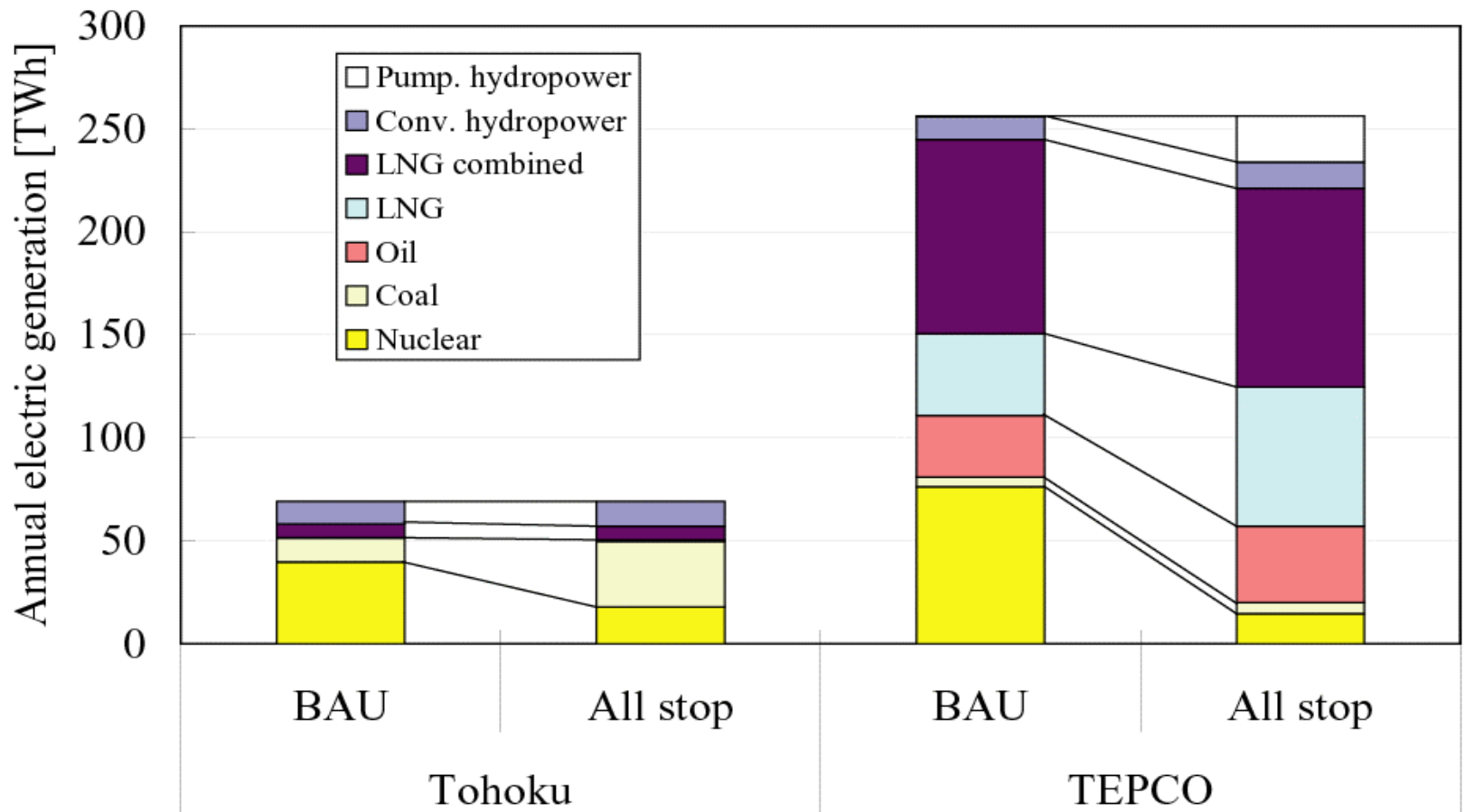
Result: Changes in electric generation in Japan



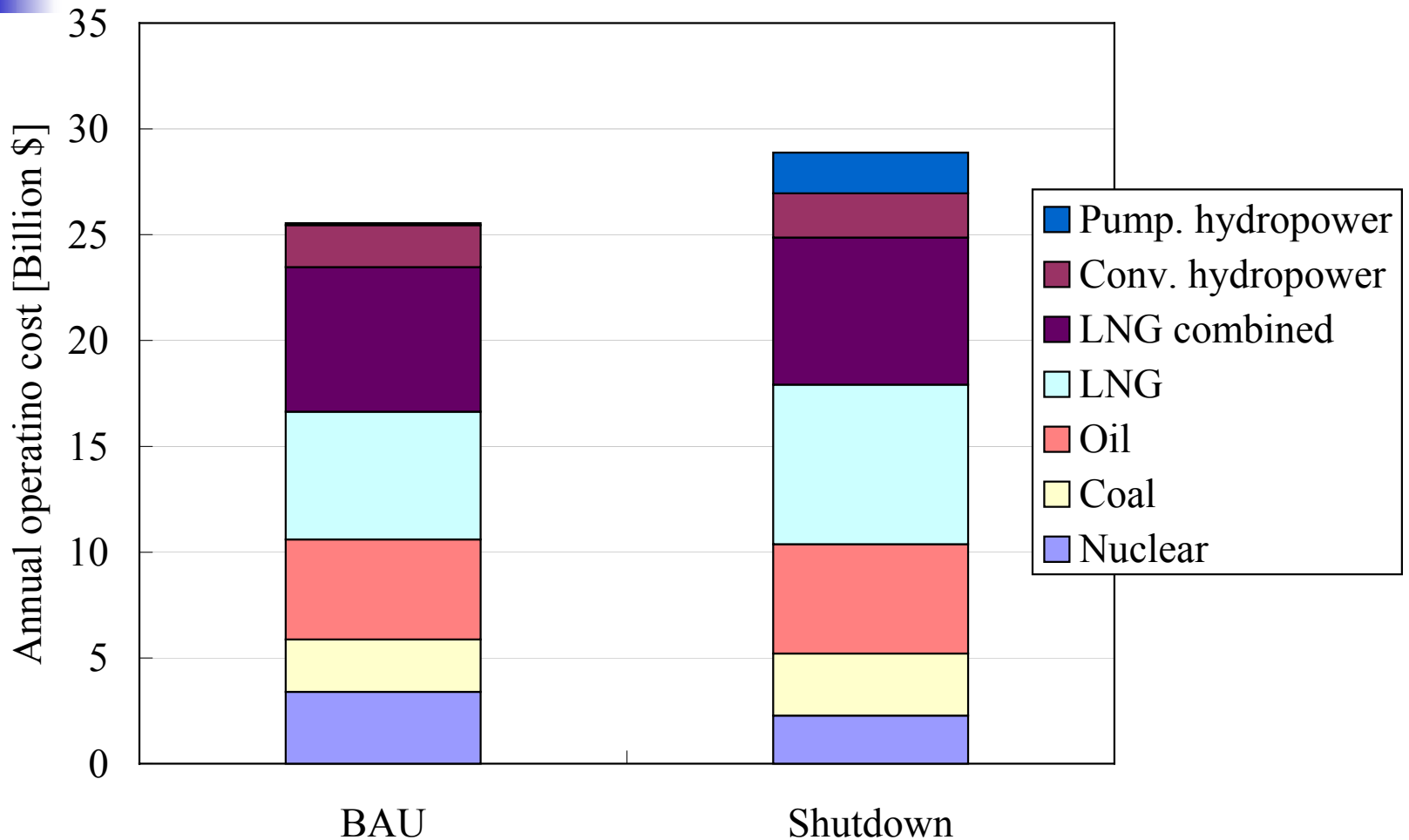
Result: Mixture of power sources at pattern A (Shutdown case)



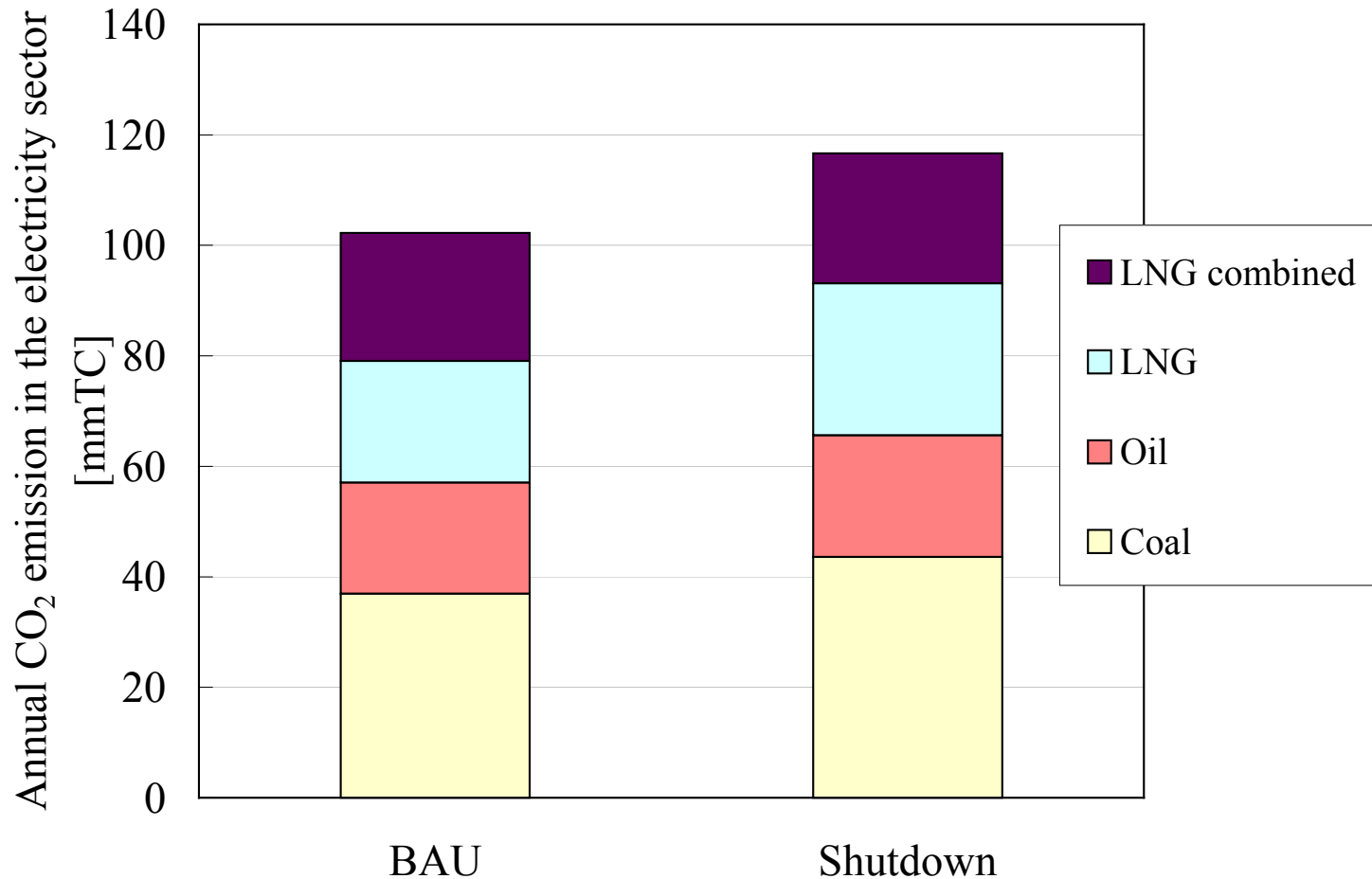
Result: Changes in electric generation in TEPCO and Tohoku



Result: Annual operation cost



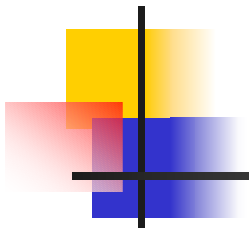
Result: Annual CO₂ emission in the electricity sector



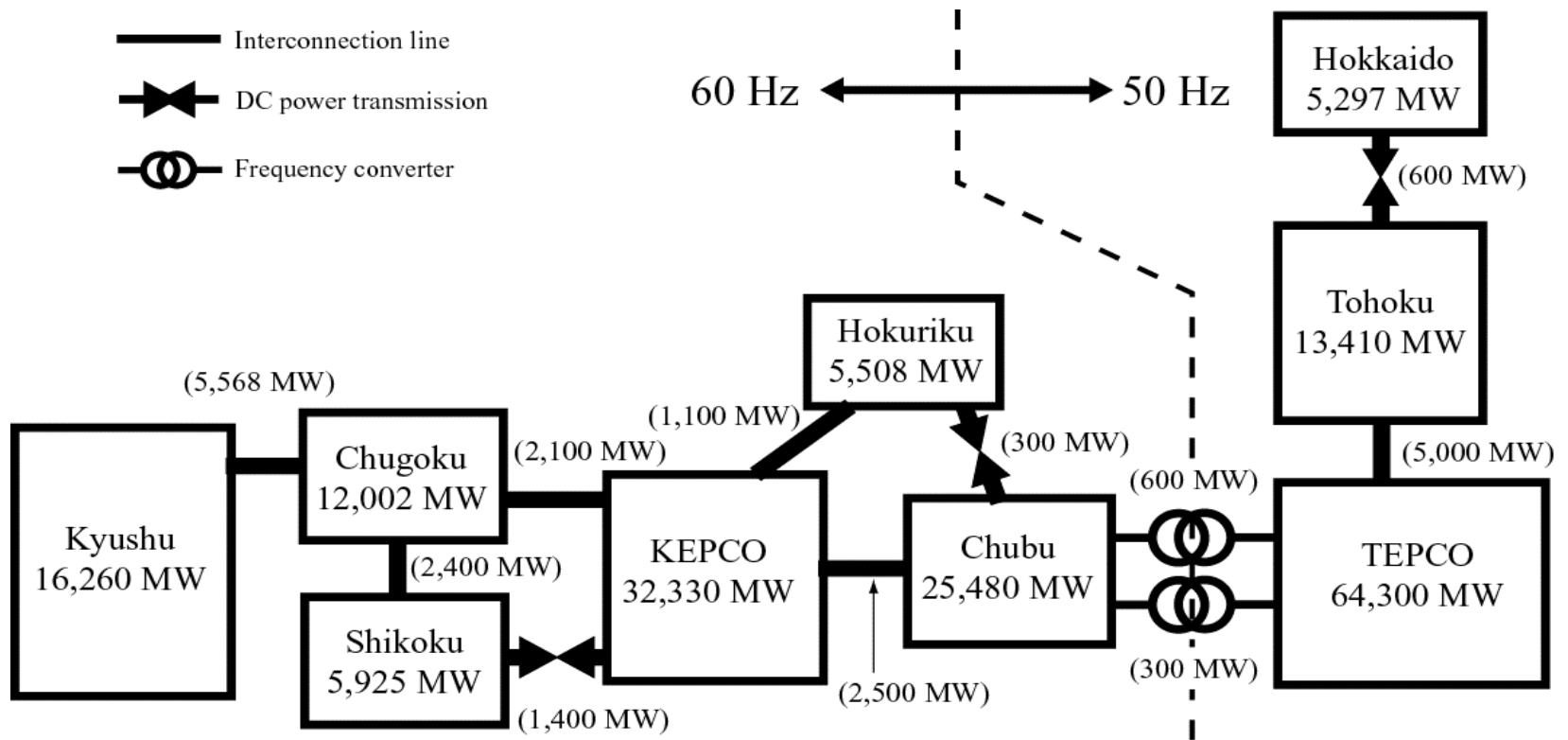


Results

- The shutdown of nuclear power plants at TEPCO has following impacts:
 - Electricity supply stability is assurable.
 - Electricity generation of coal-fired boiler and LNG-fired boiler in both TEPCO and Tohoku (next to TEPCO) increases.
 - Annual operation cost rises 13 %.
 - CO₂ emission in Japan's electricity sector increases from 102 mmTC to 117 mmTC.



Interconnection capacities and peak loads in the year 2001



Capacity constraints of power plants



$$CAPLO(P, T, RP) \leq POW(P, T, RP) \leq CAPUP(P, T, RP)$$

P: Pattern (1-7).

T: Time (1-24).

RP: Region (1-60).

POW: Electricity generation.

CAPUP: Upper limit of generation.

CAPLO: Lower limit of generation.



Supply constraint of electricity

$$\sum_R (X(P, T, R) - S(P, T, R)) = \sum_R D(P, T, R)$$

- R: Region (1-60).
- X: Supply of electricity.
- S: Supply to the pumped hydropower plant.
- D: Electricity demand.



Constraints of load-following capability

$$POW(P, T, RP) \leq FUP(RP) \times POW(P, T - 1, RP)$$

$$POW(P, T, RP) \geq FLO(RP) \times POW(P, T - 1, RP)$$

FUP: Upper limit of load-following capability.

FLO: Lower limit of load-following capability.



Constraint of transmission capacity

$$TRANS(P, T, R_1, R_2) \leq TRUP(R_1, R_2)$$

TRANS: Transmission power from region R_1 to R_2 .

TRUP: Upper limit of Transmission capacity from region R_1 to R_2 .



Nuclear power plants at TEPCO

- Total installed capacity of nuclear power reaches 17,308 MW.
 - The capacity corresponds to 38.8 percent of total installed capacity of nuclear power in Japan.
- All of this nuclear power plants has suspended operations at April 14, 2003.
- TEPCO has restarted 8 reactors, which capacity is 8,680 MW.



Assumptions of the analysis

- Power generation plants include:
 - Nuclear
 - Thermal power (coal-fired boiler, LNG-fired boiler, LNG combined cycle, oil-fired boiler)
 - Hydropower (conventional, pumped).
- Electricity transmission is supposed to lose 1% of its power per 100km.
- The capability margin of electricity supply is set at 8%.



Characteristics of power plants

	Capital cost ¹ (\$/kW)	Fixed O&M ¹ (cents/kW-yr.)	Variable O&M ¹ (cents/kWh)	Fuel cost ¹ (cents/kWh)	Thermal efficiency ² (H.H.V.) (%)
Nuclear power	2,950	2.84	0.042	1.26	32.10
Coal-fired	2,167	2.36	0.338	2.08	38.98
Oil-fired	1,667	1.37	0.010	5.83	37.04
LNG-fired	1,583	1.44	0.010	5.48	38.13
LNG combined	1,000	1.53	0.052	4.73	43.27
Hydropowered pumping	5,000	8.33	0.000	0.00	None
Conventional hydropower	2,500	2.50	0.000	0.00	None

¹Federation of Electric Power Companies. (2003). Handbook of electric power industry, Japan Electric Association, Tokyo.

²Thermal and Nuclear Power Engineering Society. (2003). *The Thermal and Nuclear Power*, Thermal and Nuclear Power Engineering Society, Tokyo.

Result: CO₂ emission in TEPCO and Tohoku

